

The *Utah Connected* Program

Blaine D Leonard, P.E., D.GE, F.ASCE
Transportation Technology Engineer

Peter Jager, P.E., PTOE
Transportation Technology Project Manager

Utah Department of Transportation

Webinar #2 – Aug 2, 2023

Thanks!

- FHWA and their ATCMTD Grants Team and local FHWA Office
 - These webinars are brought to you through ATCMTD funding
 - Background on the ATCMTD Program and our Utah Connected Grant in Webinar #1
- Muriel Xochimitl and the X-Factor Team
- Today's presenters – UDOT, Panasonic, Wall Consultant Group
- All of you – on this webinar, future webinars, and who will view these recorded webinars later

Webinar Goals

- Promote information sharing
- Share lessons learned
- Foster collaboration
- Support and encourage deployment efforts by other agencies

UDOT Transportation Technology Goals

- Safety
 - UDOT's Strategic Goal: Zero Crashes, Injuries and Fatalities
- Mobility
 - UDOT's Strategic Goal: Optimize Mobility
- Achieve Full Situational Awareness
 - Know what is going on across our entire network
- Prepare for CV-Equipped Production Vehicles
 - Full CV safety benefits require that OEMs install compatible systems
 - Encourage broad deployment



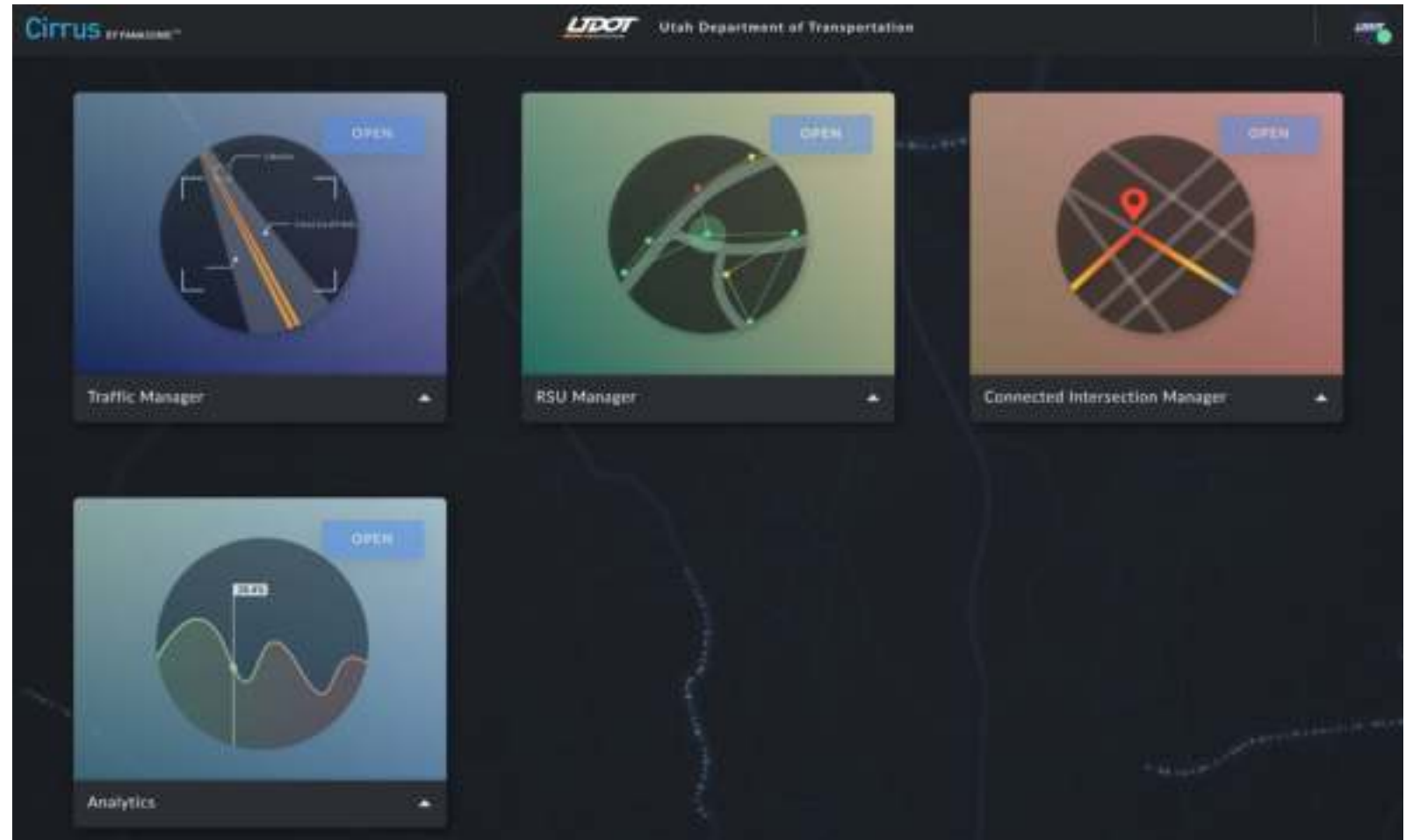
Connected Vehicle Data Ecosystem

Connected Vehicle Deployments

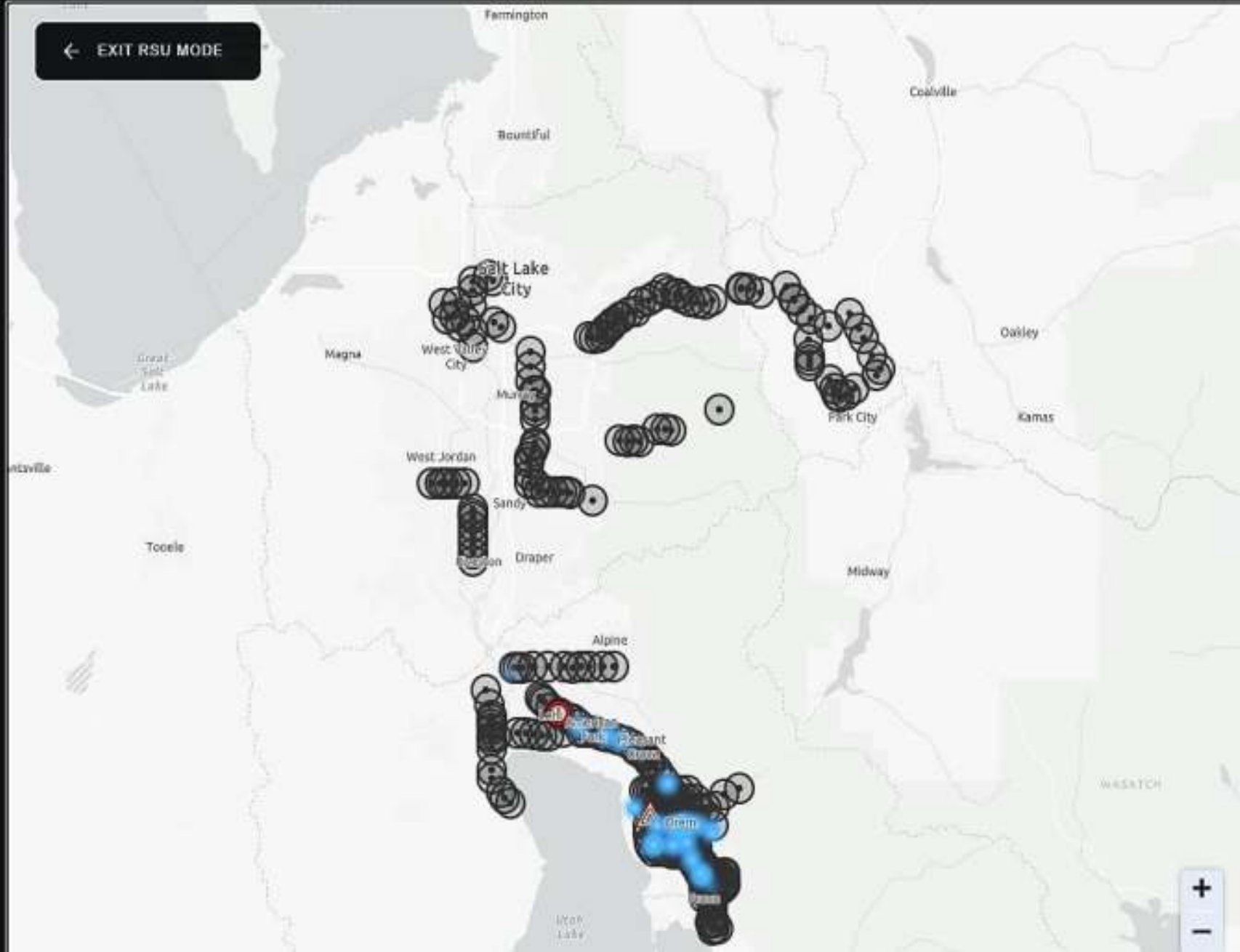


Cirrus

- Manage the RSUs
- Monitor activities on our roadways
- View connected intersection status
- Analyze our data



Cirrus-Traffic Manager



Cirrus Event Viewer

The screenshot displays the Cirrus Event Viewer interface, which is part of the LIDOT Traffic Manager system. The interface is divided into three main sections:

- Map:** A map of Colorado showing various regions including Lehi, American Fork, Pleasant Grove, Londen, Genesis, Dinosaur, Lakeview, Edwards, Steamboat View, and Provo. Several event markers are visible on the map, including a red circle with an 'i' near Lehi, a yellow triangle near Pleasant Grove, and a red circle with an 'i' near Genesis.
- Selection:** A panel on the right side of the map that currently displays the message: "You currently have nothing selected."
- Events:** A panel on the far right showing a list of events. The list is filtered and shows 4 results. The events are:
 - 4 min ago: **Hard Braking** (red circle with 'i') - lat: 40.2973, lon: -111.6944
 - 8 min ago: **Hard Braking** (red circle with 'i') - lat: 40.3929, lon: -111.8374
 - 8 min ago: **Hard Braking** (red circle with 'i') - lat: 40.3930, lon: -111.8377
 - 12 min ago: **Hazard Lights On** (yellow triangle) - lat: 40.3046, lon: -111.7314

The interface also includes a top navigation bar with the Cirrus logo, LIDOT Traffic Manager, and a Modules dropdown menu. A legend icon is visible in the bottom right corner of the map area.

Connected Intersection Manager

Cirrus BY PANASONIC™

Search: redwood

14 results

ID	Status	Location
6039	Fault-RSU	Pioneer Crossing (SR-145) & Redwood Rd (SR 68)
6014	Healthy	Parkway Blvd & Redwood Rd (SR 68)
6078	Healthy	Pony Express Pkwy & Redwood Rd (SR 68)
6079	Healthy	Ring Rd & Redwood Rd (SR 68)
6080	Healthy	Crossroads Blvd & Redwood Rd (SR 68)
6081	Healthy	Commerce Dr / Exchange Dr (1575 N) & Redwood Rd (SR 68)
6082	Healthy	Harvest Hills Blvd (2020 N) & Redwood Rd (SR 68)
6086	Healthy	2100 N (SR-194) & Redwood Rd (SR 68)
6087	Healthy	

The interface also features a map on the right showing the geographic distribution of these intersections along Redwood Rd, with status indicators (green for healthy, red for fault) overlaid on the map.



Questions / Discussion

<https://transportationtechnology.utah.gov/>